



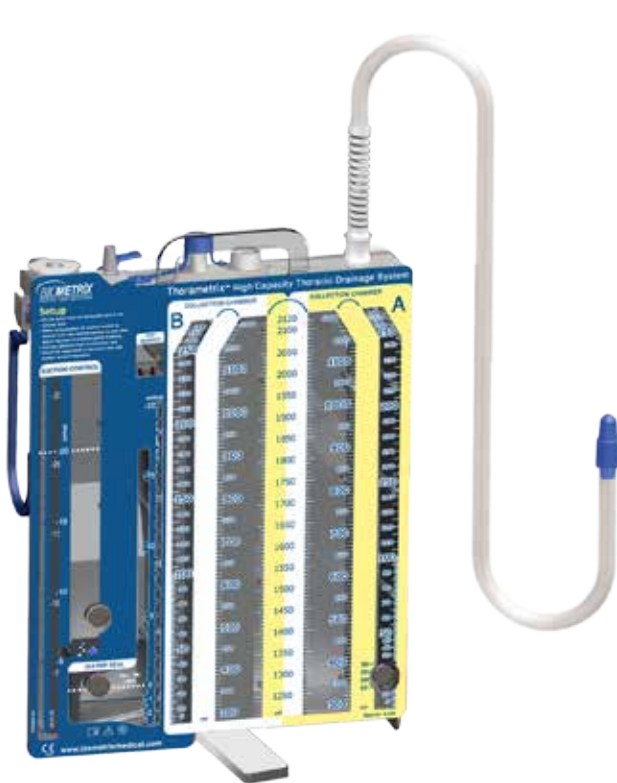
Thorametrix™

Chest Drainage Systems

Biometrix offers the Thorametrix™ 3 bottle system as a post operative chest drainage solution that is used for draining air and/or liquids from the pleural cavity. It presents a simple and convenient solution for maintaining the required amount of vacuum in a patient's chest while controlling the level of suction.

Thorametric™ Chest Drainage Systems

High capacity systems are ideal for intensive care and cardio-thoracic units

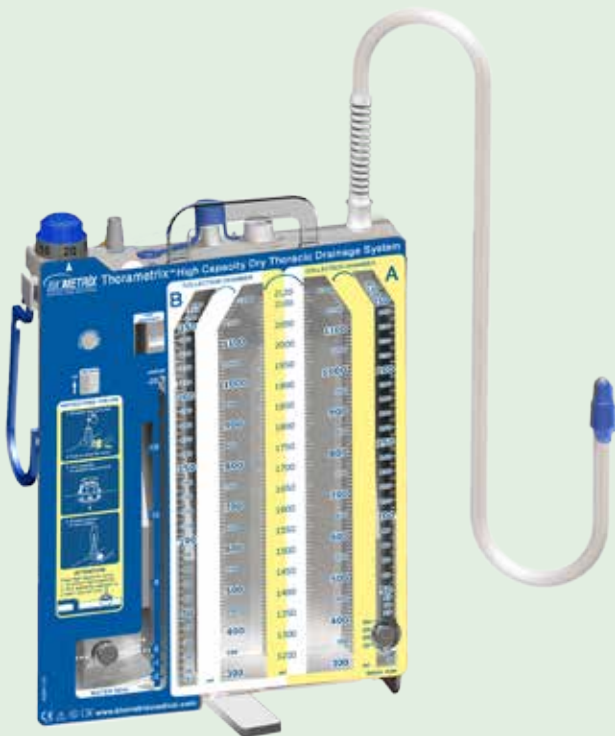


Wet High Capacity: 2300 ml



Wet Compact Capacity: 1150 ml

Compact capacity systems are ideal for newborn, pediatric, trauma and Pneumothorax cases.



Dry High Capacity: 2300 ml



Dry Compact Capacity: 1150 ml

ThorametricTM Chest Drainage Systems **Wet & Dry Drainage**

With its clear chambers for accurate fluid loss assessment, easy-to-use handle bed hangers, floor stands and pre-connected drainage tubing, the Thorametric offers a good value for physicians and patients.

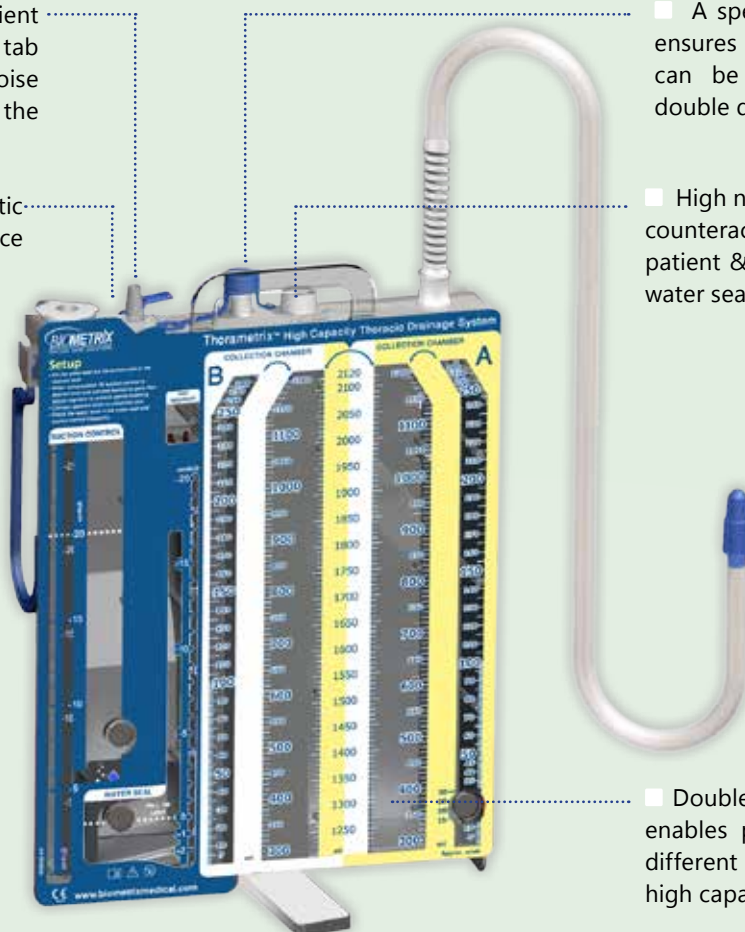
Wet Suction

■ Suction Regulator – convenient and easy-to-use adjustment tab for de-creasing the bubbling noise and water evaporation from the suction control chamber

■ Positive pressure automatic relief valve avoids the occurrence of tension pneumothorax

■ A special secure cap on port B ensures patient safety. The device can be used for single and/or double drainage.

■ High negativity manual relief valve counteracts pressures generated by patient & prevents loss of seal when water seal is lost



■ Double symmetrical chest drainage enables parallel drainage from two different sites of the pleural cavity (in high capacity systems)

Code	Description	Qty/Box
NC-5512	2300ml System, High Capacity	5
NC-5514	2300ml System, High Capacity with quick disconnecting device & Sampling Port	5
NC-3311	1150ml System, Compact	5
NC-3314	1150ml System, Compact with quick disconnecting device & Sampling Port	5

Compact size is ideal for newborn and pediatric cases



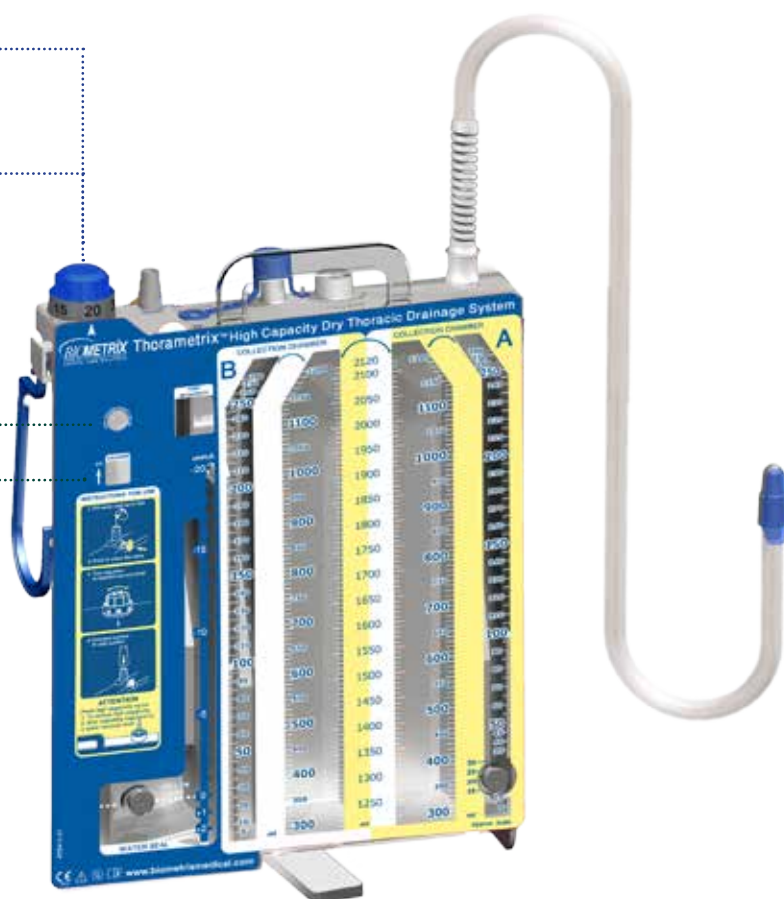
Dry Suction

■ Easier and faster setup of drainage system with no need to fill/refill suction chamber

■ Allows easier setting of suction levels (-10cmH₂O -40cmH₂O), for a wider range of medical procedures

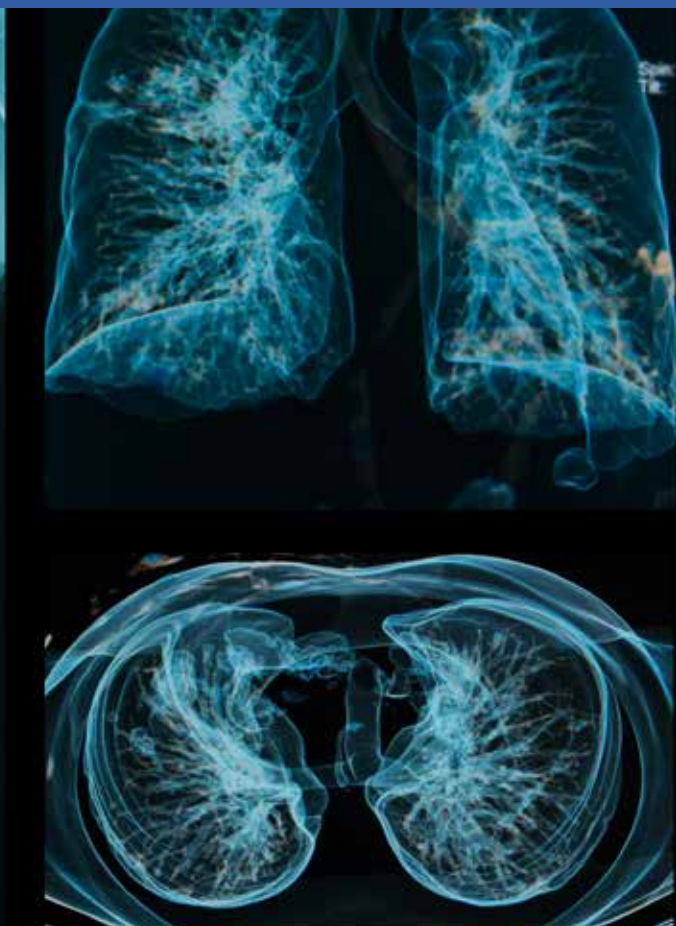
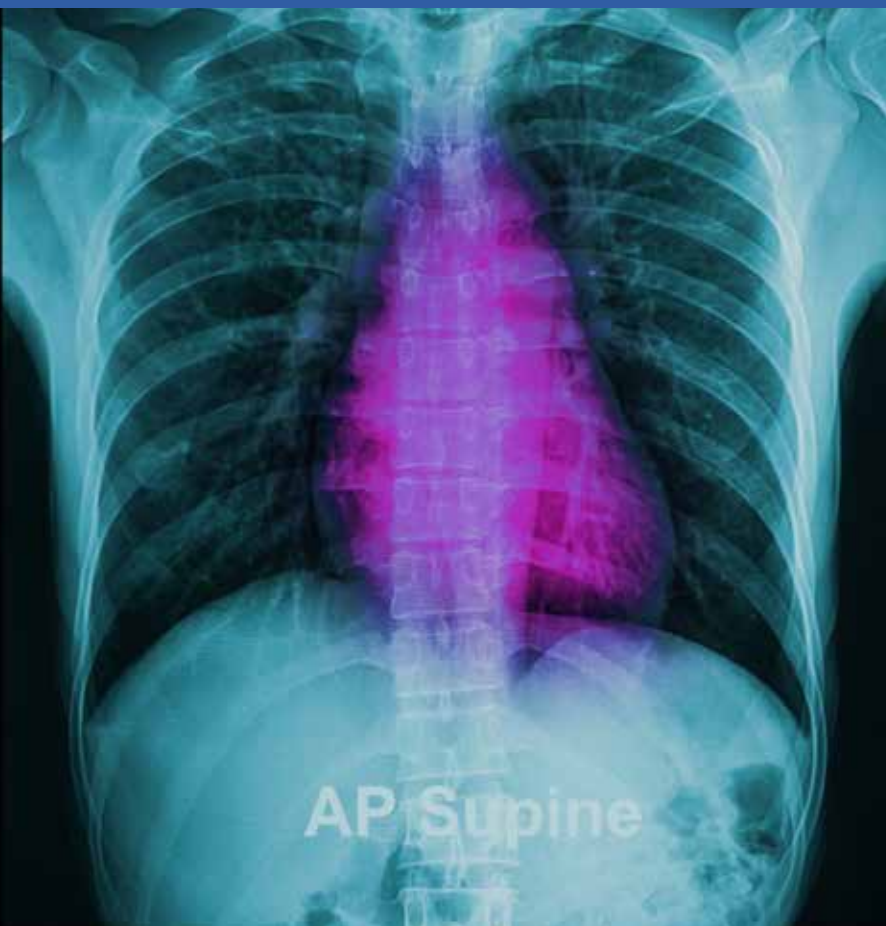
■ Anti-reflux valve for indicating abnormal high negativity and preventing water loss

■ Vacuum Indicator – visual indicator of the imposed suction



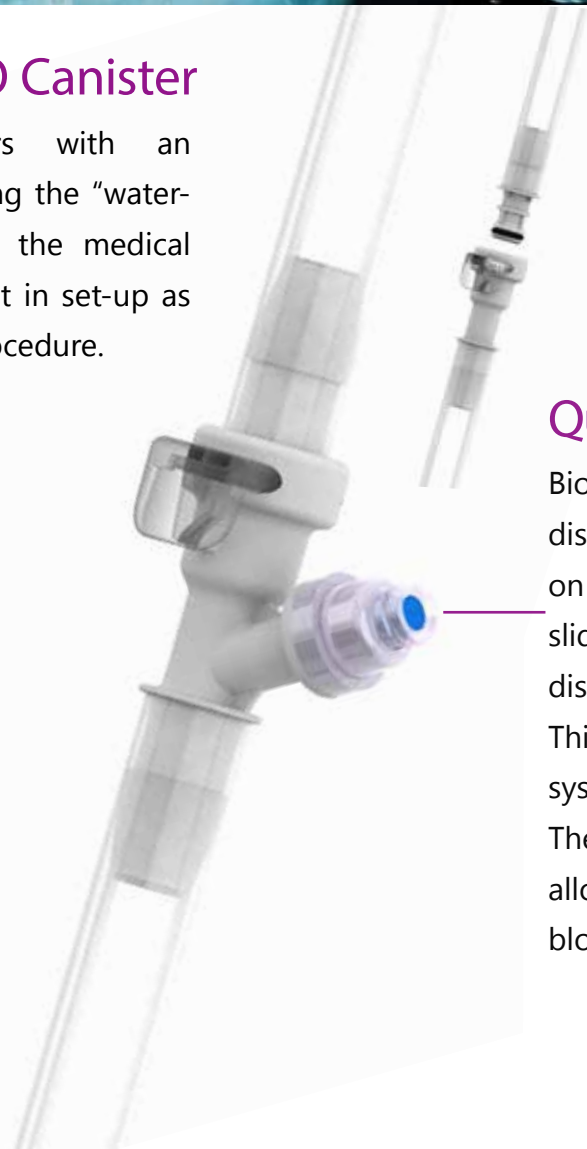
Code	Description	Qty/Box
NC-7512	2300ml System, High Capacity Dry	5
NC-7514	2300ml System, High Capacity Dry with quick disconnecting device & sampling port	5
NC-7515	2300ml System, High Capacity Dry with quick disconnecting device & sampling port & H ₂ O Canister	5
NC-8311	1150ml System, Compact Dry	5
NC-8314	1150ml System, Compact Dry with quick disconnecting device & sampling port	5
NC-8315	1150ml System, Compact Dry with quick disconnecting device & sampling port & H ₂ O Canister	5

Compact size is ideal for newborn and pediatric cases



Thorametrix™ H₂O Canister

Providing our customers with an ergonomic solution for filling the "water-seal". This feature enables the medical staff to save time and effort in set-up as well as maintain a sterile procedure.



Quick Disconnecting Device

Biometrix offers a quick disconnecting device feature on the tubing set. There is a slide clamp which enables safe disconnection of the system. This allows replacement of the system efficiently and easily. The needleless sampling port allows easy and quick "fresh" blood sampling.

Single Bottle System

The Biometrix single bottle system, part of the Thorametrix™ product line, is used for draining air and/or liquids from the pleural cavity.

- Used for draining air and/or liquids from the pleural cavity
- Straight forward, comprehensive design that incorporates an underwater seal, the most important element in pleural drainage
- Ideal for ambulatory use in cases of massive pleural effusion
- Combines versatility and efficiency, alongside safety and convenience

Code	Description	Qty/Box
NE-1101	Thorametrix Single Chest Drainage System	20



Pneumothorax

Treating Spontaneous Pneumothorax, Tension Pneumothorax and Hemothorax

- Polyurethane micro-puncture catheter that minimizes patient trauma.
- The sets are based on both Seldinger and non Seldinger options, with accessories such as extension tubes, Heimlich valves, patient drapes and drainage bags.
- The Pneumothorax Pigtail Catheter has a hydrophilic coating and smooth tip surface which facilitates catheter introduction and distal pigtail shape prevents catheter movement after insertion.

Code	Description
NP-1000	Non Seldinger Type Pneumothorax Set
NP-1005	Seldinger Type Pneumothorax Set
NP-1001	Seldinger Type Pneumothorax Set with Drainage Bag
NP-2000	Pneumothorax Pigtail Catheter Set

Qty/Box: 10

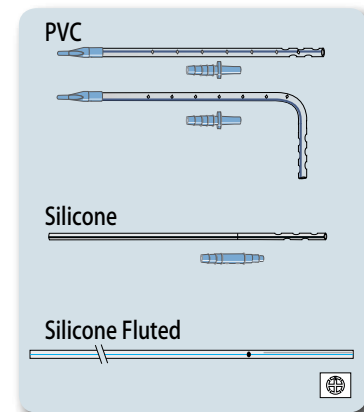


Seldinger Non-Seldinger Pneumothorax Pigtail Catheter

PVC Radiopaque Thoracic Catheters

Code	Description	Fr Size
NM-1160	Straight	16
NM-1200	Straight	20
NM-1240	Straight	24
NM-1280	Straight	28
NM-1320	Straight	32
NM-1360	Straight	36
NM-2160	Right Angle	16
NM-2200	Right Angle	20
NM-2240	Right Angle	24
NM-2280	Right Angle	28
NM-2320	Right Angle	32
NM-2360	Right Angle	36

Qty/Box: 50



Silicone Radiopaque Thoracic Catheters

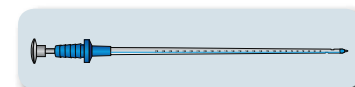
Code	Fr Size	Length
NL-1620	16	70cm
NL-1820	18	70cm
NL-2020	20	70cm
NL-2420	24	70cm
NL-2820	28	70cm
NL-3220	32	70cm
NL-3620	36	70cm
MW-3190	19Fr Round	110cm
MW-3240	24Fr Round	110cm

Qty/Box: 50, MW-XXX0: 25

Trocar Catheters

Code	Fr Size	Catheter Length
NN-0008	8	20cm
NN-0010	10	23cm
NN-0012	12	23cm
NN-0016	16	23cm
NN-0020	20	39cm
NN-0024	24	39cm
NN-0028	28	39cm
NN-0032	32	39cm

Qty/Box: 20






DSP MED S.L.
QMD's Middle East Exclusive Distributor

CONTACT US >>>

DSP^{S.L.}med
Biometrix™ Products
Performance for Life

 | WWW.DSPMed.COM

 | info@dspmed.com

 | Plaza de la Solidaridad nº12, 5ª
planta 29006 Málaga
Spain